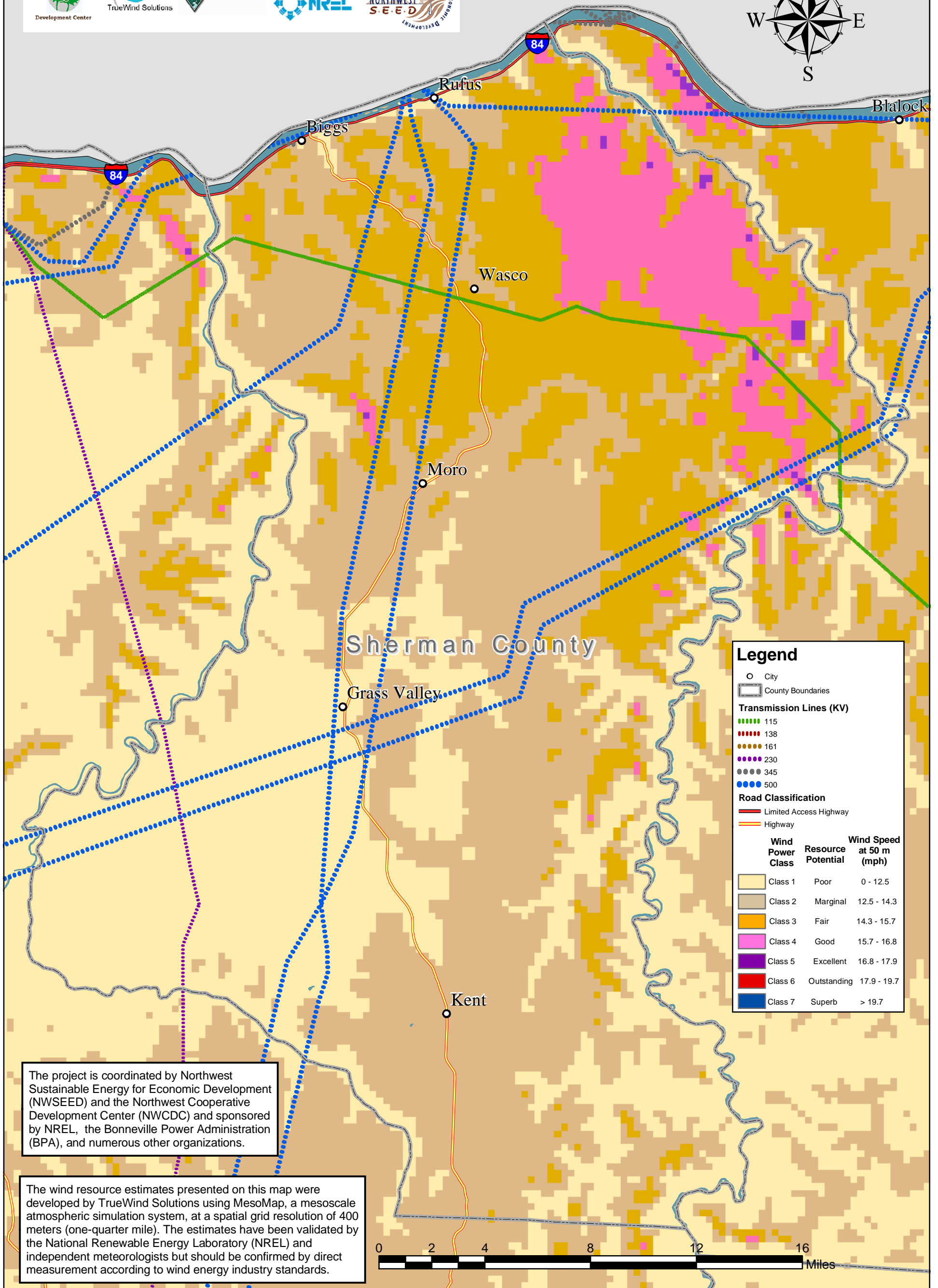
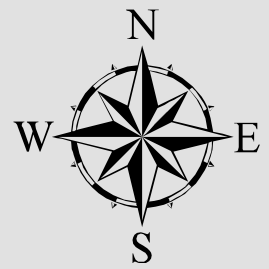


Sherman County Wind Power Resources

www.windpowermaps.org



Legend		
○	City	
□	County Boundaries	
Transmission Lines (KV)		
●●●●●	115	
●●●●●	138	
●●●●●	161	
●●●●●	230	
●●●●●	345	
●●●●●	500	
Road Classification		
—	Limited Access Highway	
—	Highway	
Wind Power Class	Resource Potential	Wind Speed at 50 m (mph)
Class 1	Poor	0 - 12.5
Class 2	Marginal	12.5 - 14.3
Class 3	Fair	14.3 - 15.7
Class 4	Good	15.7 - 16.8
Class 5	Excellent	16.8 - 17.9
Class 6	Outstanding	17.9 - 19.7
Class 7	Superb	> 19.7

The project is coordinated by Northwest Sustainable Energy for Economic Development (NWSEED) and the Northwest Cooperative Development Center (NWCDC) and sponsored by NREL, the Bonneville Power Administration (BPA), and numerous other organizations.

The wind resource estimates presented on this map were developed by TrueWind Solutions using MesoMap, a mesoscale atmospheric simulation system, at a spatial grid resolution of 400 meters (one-quarter mile). The estimates have been validated by the National Renewable Energy Laboratory (NREL) and independent meteorologists but should be confirmed by direct measurement according to wind energy industry standards.

