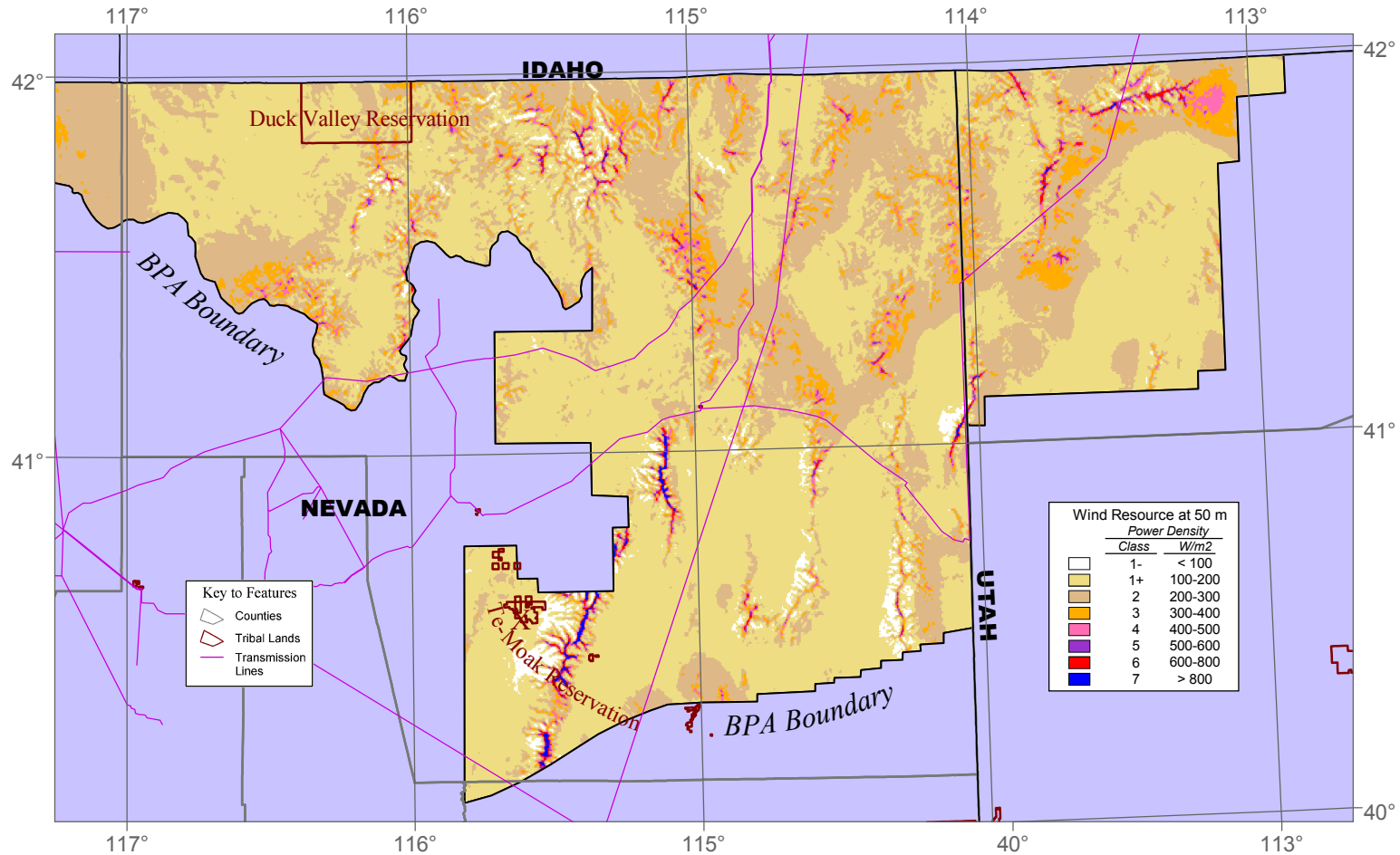


# Wind Power Map of the BPA Sections of Northeastern Nevada and Northwestern Utah at 50m



Projection: Universal Transverse Mercator (Zone 11)  
Spatial Resolution of Wind Resource Data: 400 m

This map was created by TrueWind Solutions using the Mesomap system and historical weather data. It has been validated with available surface data by the National Renewable Energy Laboratory. Although it is believed to represent an accurate overall picture of the wind energy resource, estimates at any location should be confirmed by measurement.