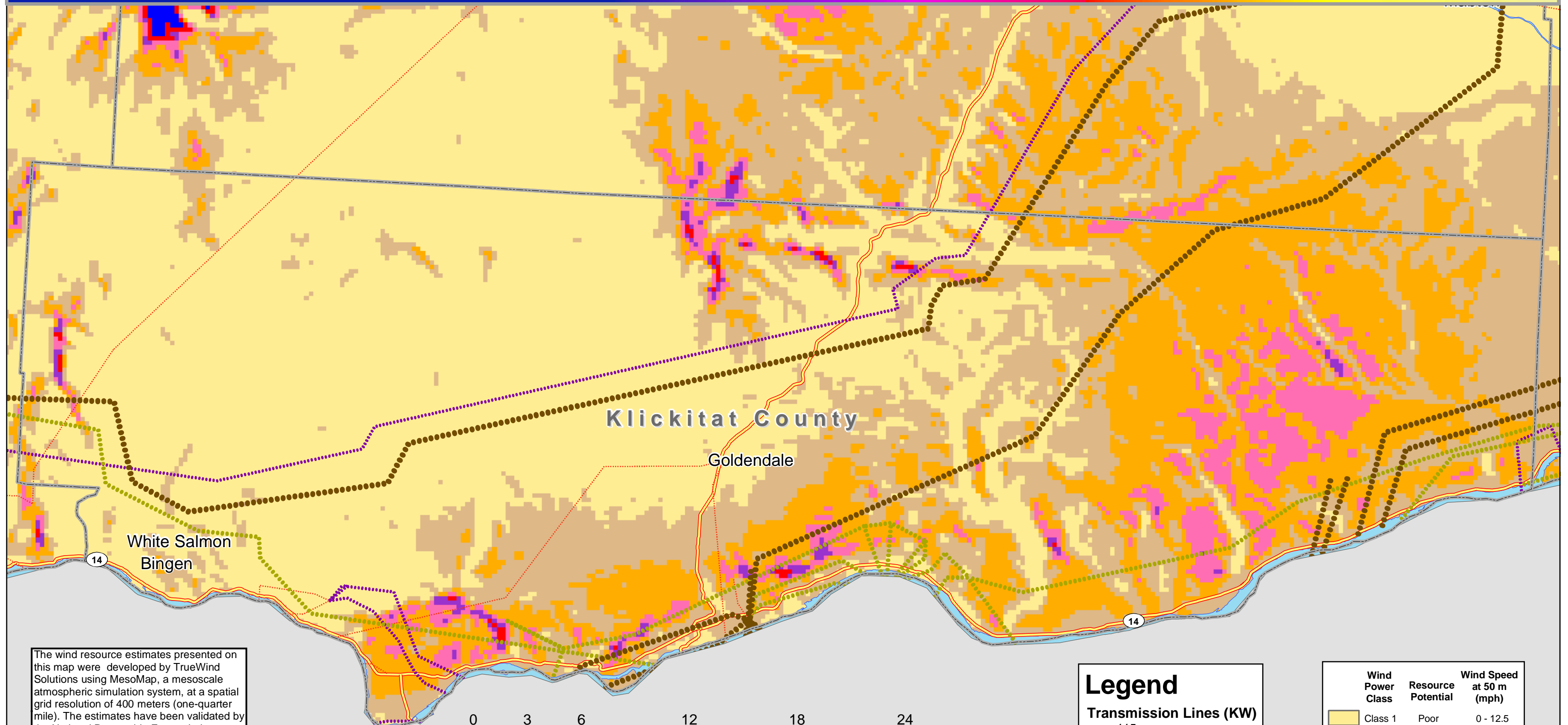
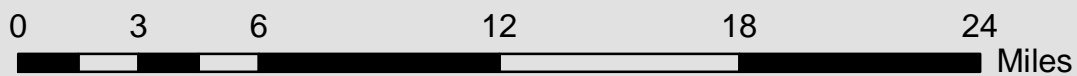


Klickitat County Wind Power Resources

www.windpowermaps.org



The wind resource estimates presented on this map were developed by TrueWind Solutions using MesoMap, a mesoscale atmospheric simulation system, at a spatial grid resolution of 400 meters (one-quarter mile). The estimates have been validated by the National Renewable Energy Laboratory (NREL) and independent meteorologists but should be confirmed by direct measurement according to wind energy industry standards.



Legend

Transmission Lines (KW)

- 115
- 138
- 161
- 230
- 345
- 500

Road Classification

- Limited Access Highway
- Highway

Wind Power Class	Resource Potential	Wind Speed at 50 m (mph)
Class 1	Poor	0 - 12.5
Class 2	Marginal	12.5 - 14.3
Class 3	Fair	14.3 - 15.7
Class 4	Good	15.7 - 16.8
Class 5	Excellent	16.8 - 17.9
Class 6	Outstanding	17.9 - 19.7
Class 7	Superb	> 19.7

The project is coordinated by Northwest Sustainable Energy for Economic Development (NWSEED) and the Northwest Cooperative Development Center (NWCDC) and sponsored by NREL, the Bonneville Power Administration (BPA), and numerous other organizations.

